

WASHINGTON STATE

SALT DOUGH MAP

Due Date: Dec. 7th

You have the option of making the topographical map out of salt dough or out of paper.

Materials for a Salt Dough Map:

- Large piece of cardboard, heavy poster board, or thin piece of wood
- Several cups of salt
- Several cups of flour
- Food coloring
- Water

Directions:

1. On large cardboard or poster board, draw an outline of the state of Washington. Trace in where the Olympic Mountains and Cascade Mountains will be placed.
2. Mix salt and flour using 2 parts salt to 1 part flour.
3. Stir in enough water to make a smooth heavy paste. (you may have to experiment to make the dough work out right)
4. Divide the paste into 4 parts.
5. Use the lightest color mix for the lowlands, the medium color mix for the start of the mountains, the darkest color for the highest part of the mountains. Use the fourth color to add in the location of our state's volcanoes.
6. Place dough onto the outline to form a relief map of Washington.

Details

Sketch in the following details and then paint or use a wide tipped felt pen:

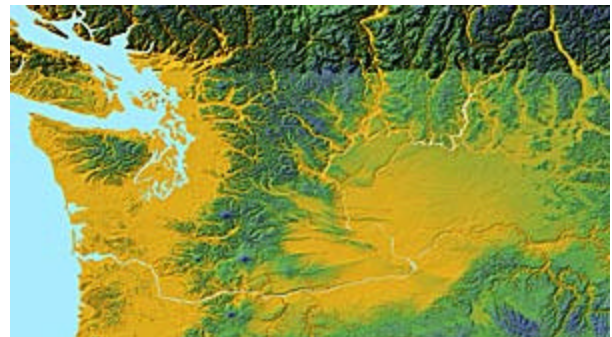
- Paint and label 2 rivers in Western Washington and 2 rivers in Eastern Washington
- Paint and label the Olympic Mountains and the Cascade Mountains
- Paint and label the four largest volcanoes in the state
- Paint and label the Pacific Ocean
- Paint and label 3 lakes in our state
- Paint and label the Puget Sound
- Label: Monroe, Everett, Seattle, Tacoma, Olympia, Tri-Cities, Spokane

Hints:

- For a more attractive map, don't put your map directly on bare cardboard. Paint the cardboard or cover it with foil first.
- Use a ruler to measure map and draw to scale. Use the map in the Washington State History book to guide you or the relief map on the class web page.
- Print out labels using a computer. Cut them out and glue them down neatly or use them to make flags. (If you don't have a printer you can use the classroom printer as long as you don't wait until the day before the project's due. Sign up several days in advance.)

Grading:

Your Salt Dough Map will be graded for neatness, accuracy of information, inclusion of details, and completion of project according to directions. *Parents are encouraged to help and contribute to the project, however the majority of the work and responsibility is up to you!*





1. Use the lightest color mix for the lowlands, the medium color mix for the start of the mountains, the darkest color for the highest part of the mountains. Use the fourth color to add in the location of our state's volcanoes.
2. Place dough onto the outline to form a relief map of Washington.

Details

Sketch in the following details and then paint or use a wide tipped felt pen:

- Paint and label 2 rivers in Western Washington and the Columbia River and its tributaries in Eastern Washington
- Paint and label the Olympic Mountains and the Cascade Mountains
- Paint and label the four largest volcanoes in the state
- Paint and label the Pacific Ocean
- Paint and label the 3 largest lakes in our state
- Paint and label the Puget Sound
- Label: Monroe, Everett, Seattle, Tacoma, Olympia, Tri-Cities, Wenatchee, Spokane

Example map outline was traced first on to a foam core board. A pencil was used to sketch in where the mountains, lakes, rivers, volcanoes, etc were located. Using salt dough the mountains and volcanoes were built on the map and left to dry. Painting in the ocean, lowlands, Puget Sound and rivers was done next. The last step was printing labels to put on the map.

Student:	Score	
Assignment: Topographical Map of the State of Washington		
Comments:		
Description	Possible Points	Points Earned
Topographical details evident on map	38	
Olympic Mountains	2	
Cascade Mountains	2	
Mt. Rainer	2	
Mt. St. Helen's	2	
Mt. Adams	2	
Mt. Baker	2	
Pacific Ocean	2	
River 1 in Eastern Washington	2	
River 2 in Eastern Washington	2	
River 1 in Western Washington	2	
River 2 in Western Washington	2	
Lake 1	2	
Lake 2	2	
Lake 3	2	
Puget Sound	2	
Monroe	2	
Everett	2	
Seattle	2	
Tacoma	2	
Olympia	2	
Tri-Cities	2	
Spokane	2	
Neatness	6	
Accuracy	6	
Project followed directions	6	
Total Points Possible	100	